



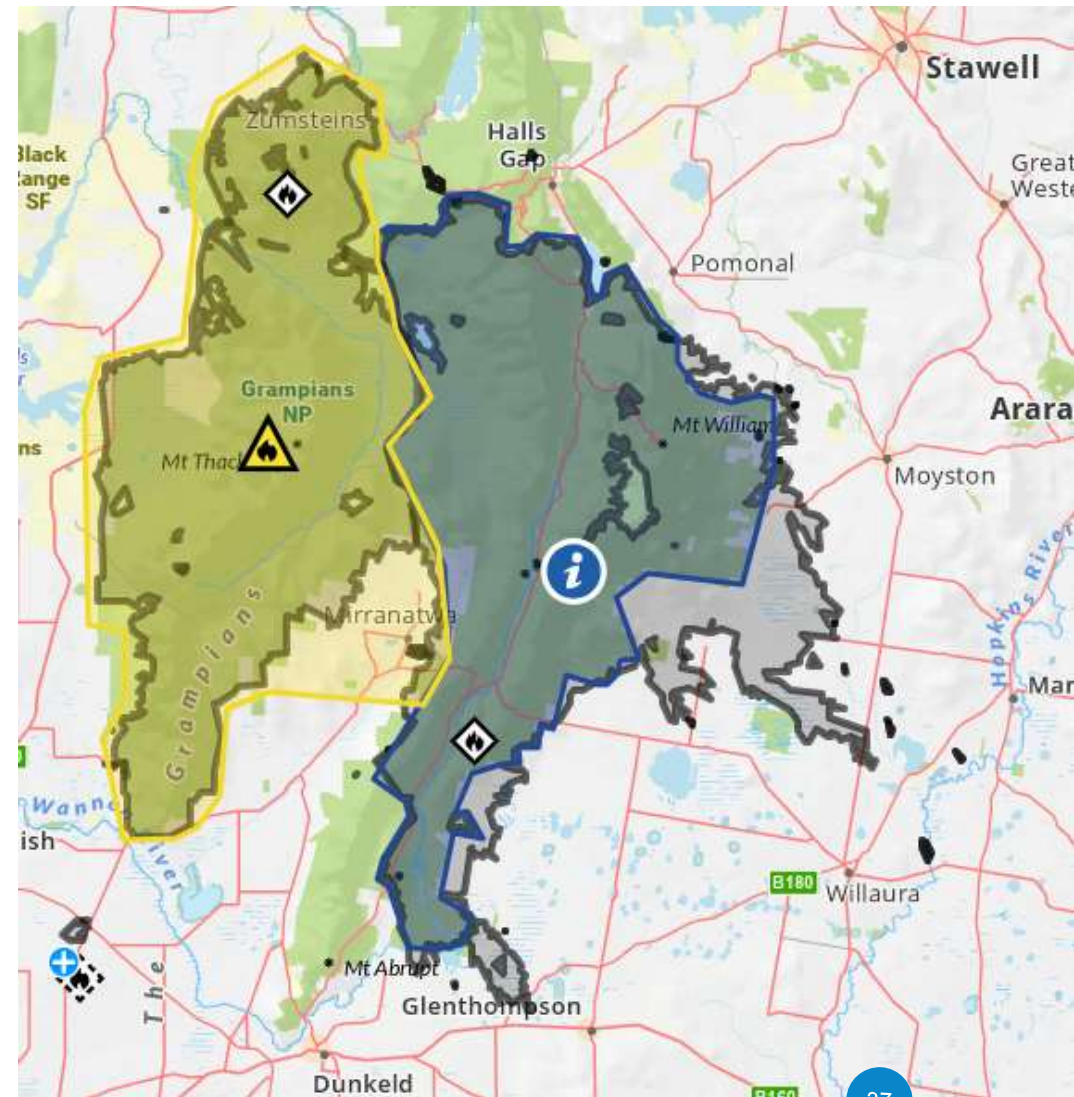
2025 Bushfires

Nick Mumford
Executive Manager Service Delivery



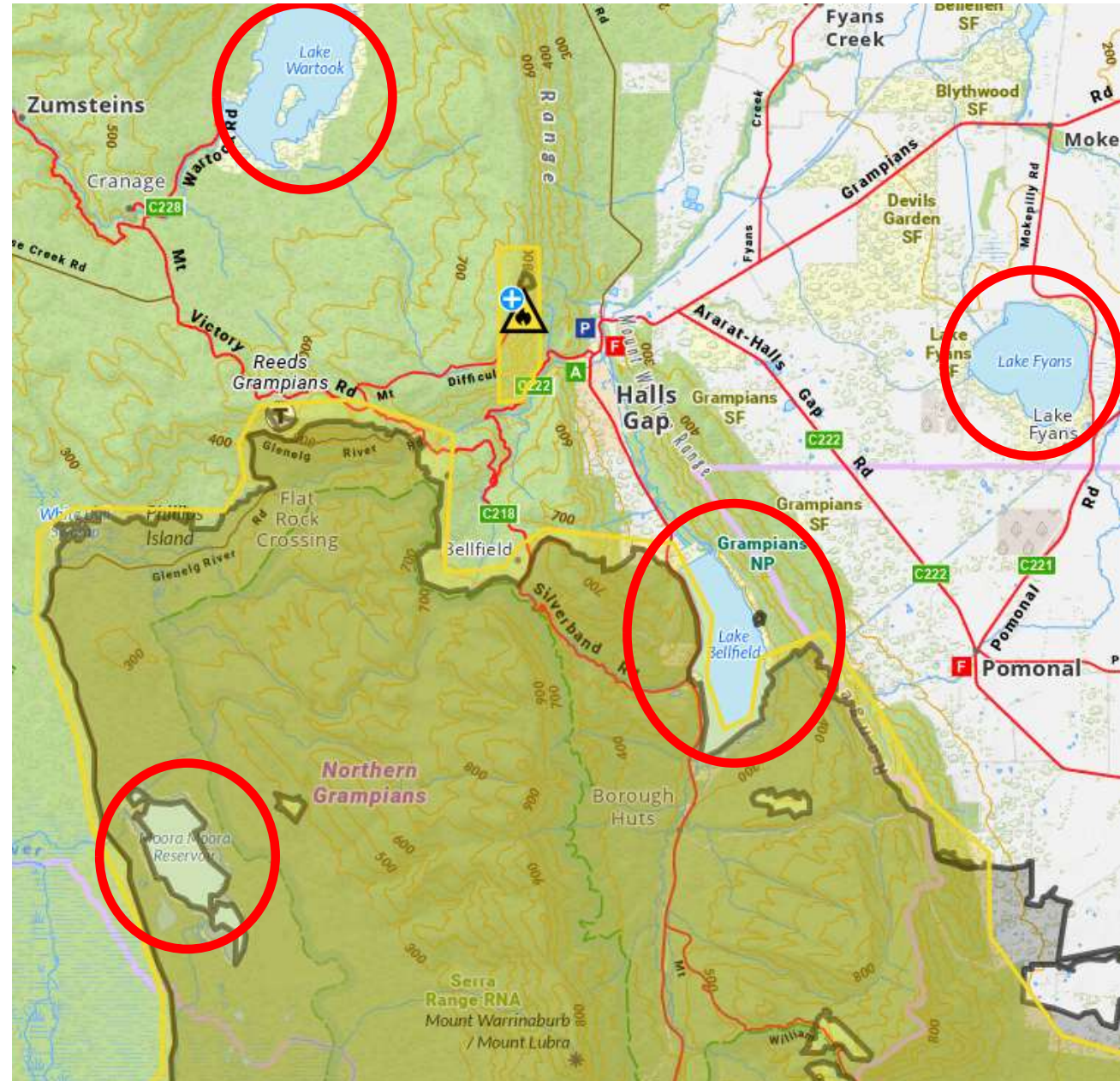
Grampians-Yarram Gap Road Bushfire

- Started 17 December 2024 from dry lightning
- Under control 13 January 2025
- 76,476 ha Grampians National Park impacted

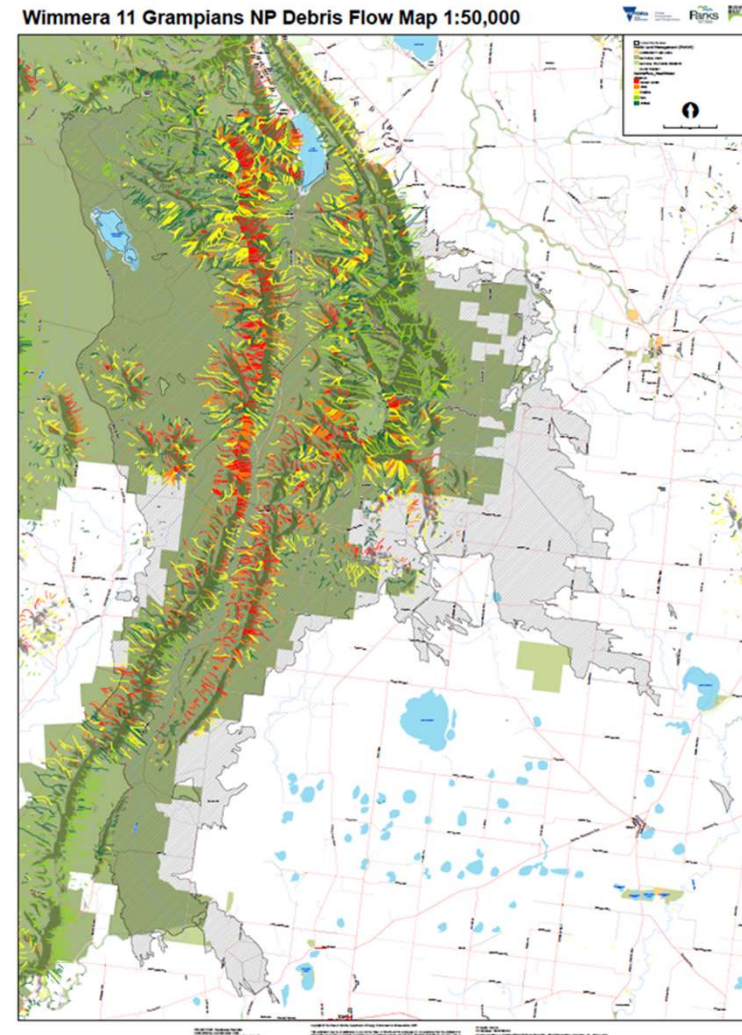
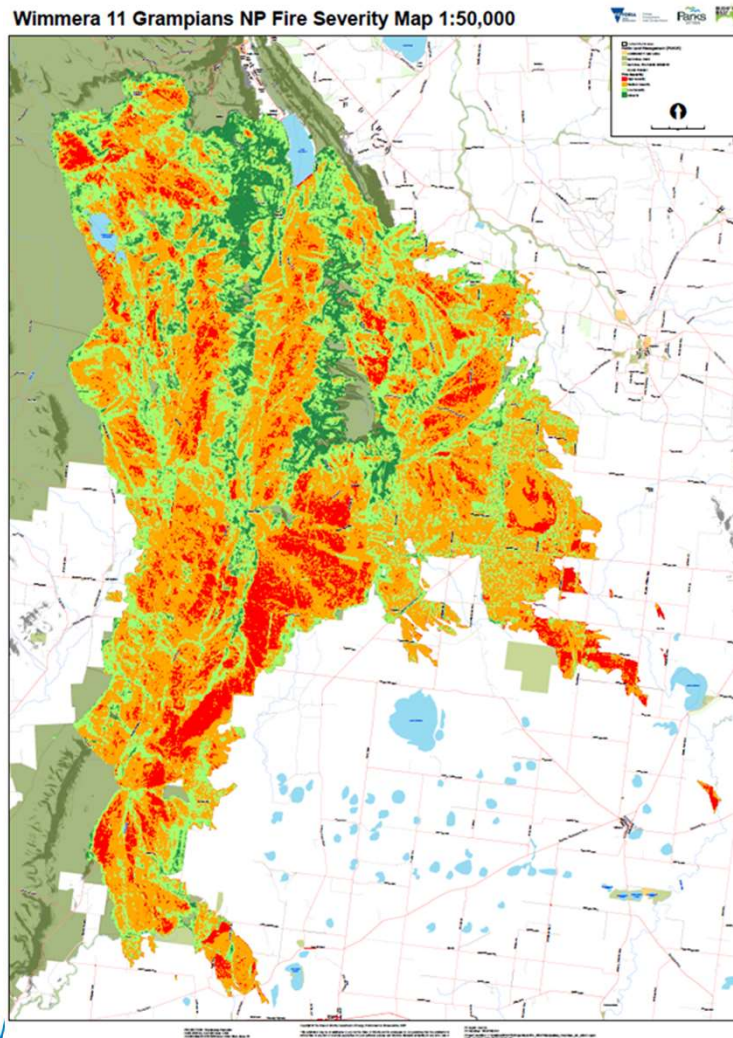


Our reservoirs

- Lake Bellfield and Moora Moora within fire impact area.
- Lake Bellfield supplies the Wimmera Mallee Pipeline
- Lake Bellfield transfers water into Lake Fyans which then supplies Ararat and Stawell.



Yarram Gap Fire Severity and Debris Flow Map















Grampians-Yarram Gap Road Bushfire: Impacts

- Mt. William bores & power lines, resulting in no power to Mt. William bores.
- Remote communications to Mt. William bores impacted.
- Rural customers lost water for ~3 days.
- Pressure issues in the Willaura headworks system for week after power restoration.
- Neumerous breaks on supply line in area exposed/damaged by dozed fire track.



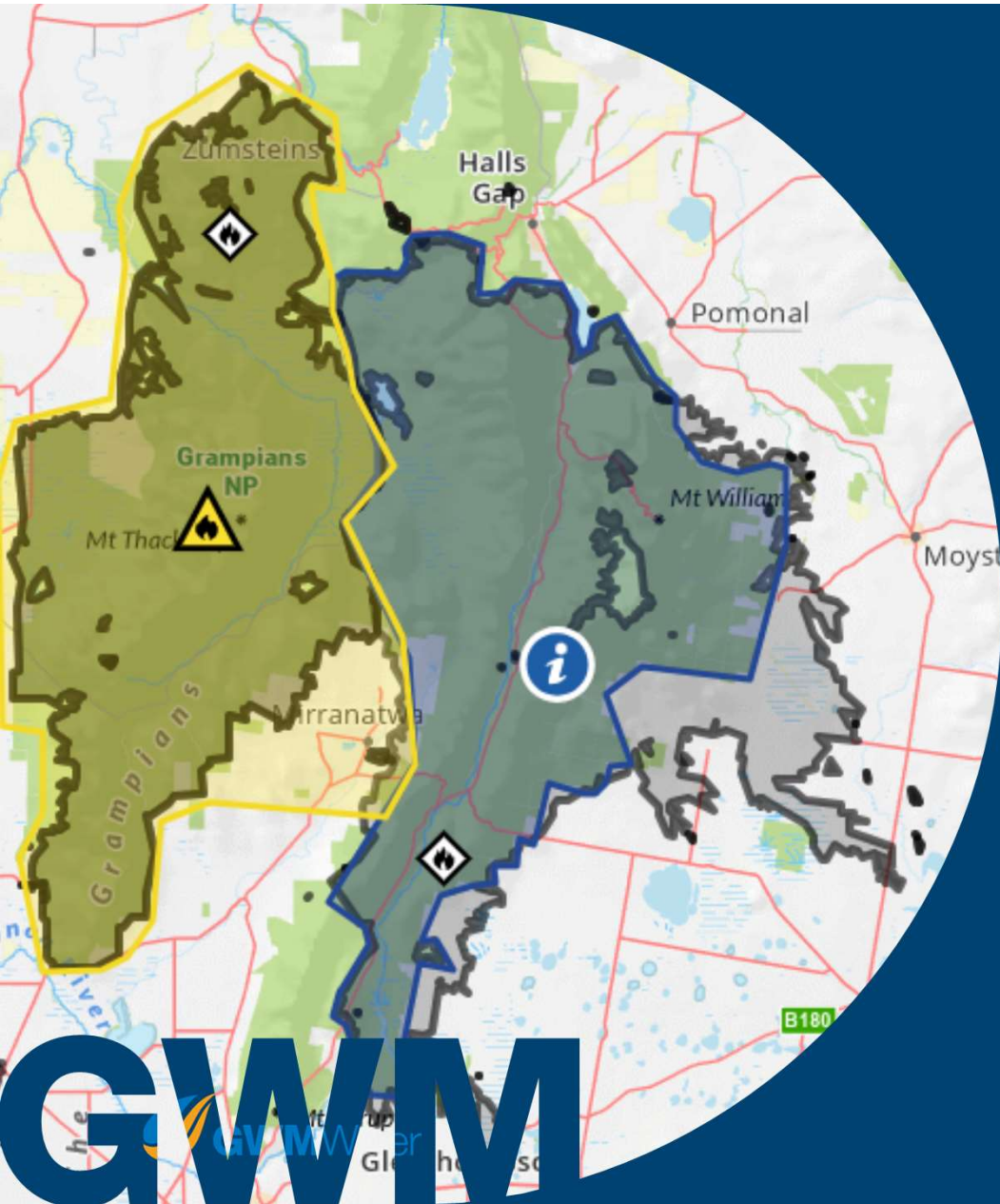






Incident Costs

- Incident Management Team active for 51 days
- Cost incurred ~ \$900,000
- Costs include -
 - Water Carting
 - Generator Hire and Electrical Works
 - Asset Repairs
 - Silt Mitigation Plan

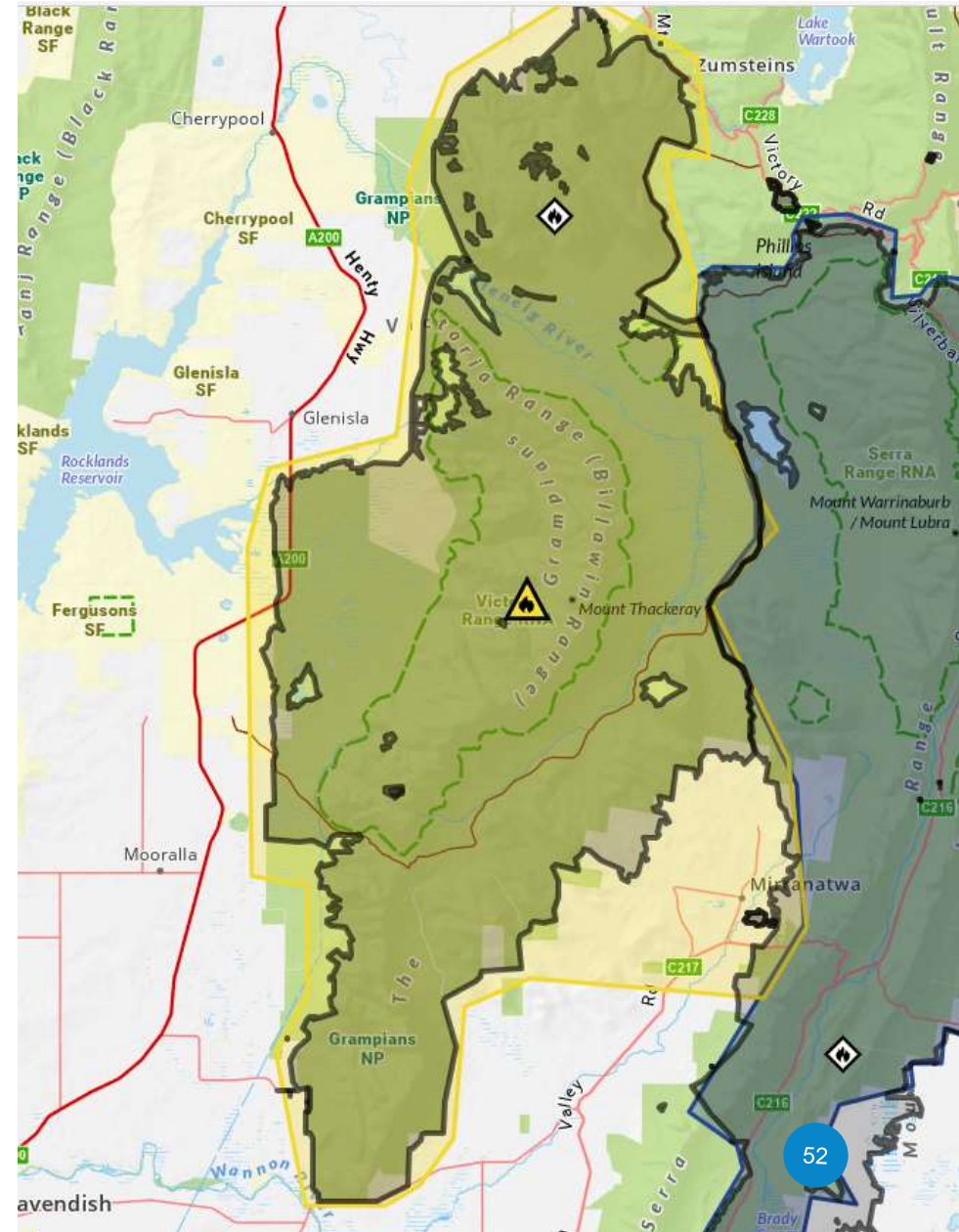


Victoria Range Bushfire

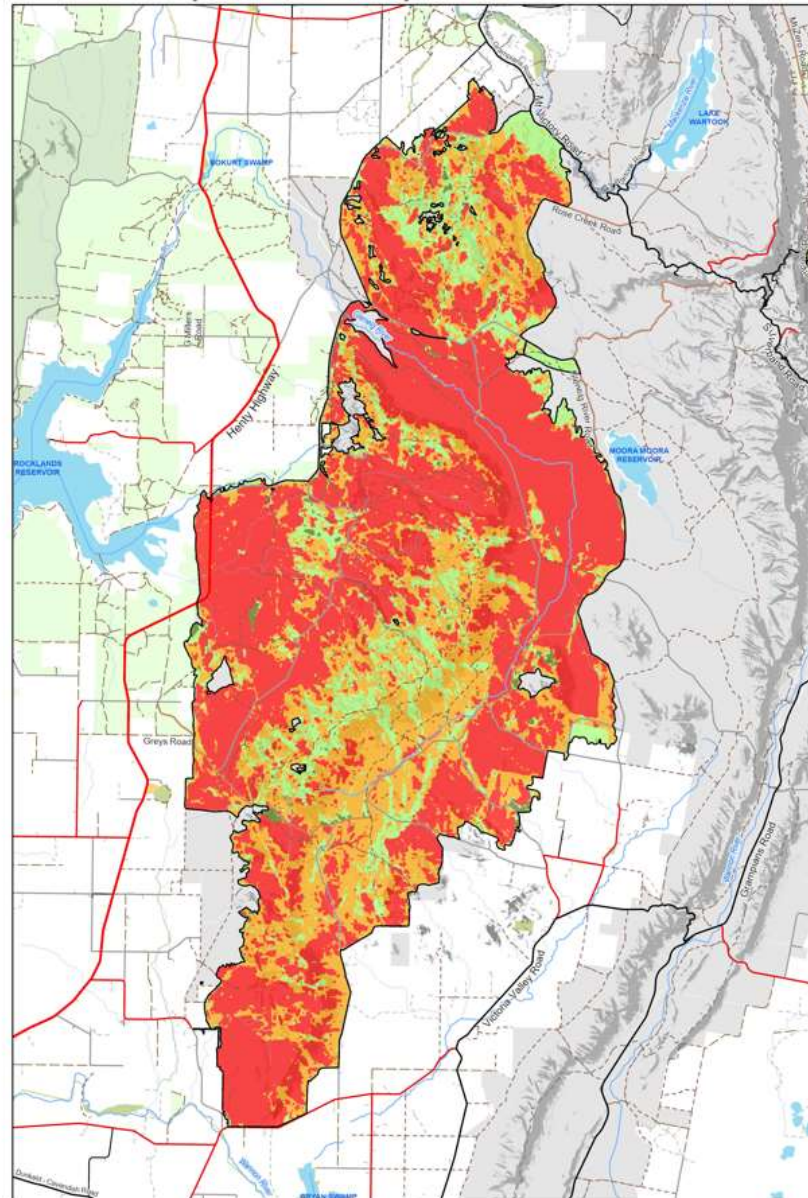


Victoria Range Bushfire

- Started after lightning strikes 27 January 2025.
- Two main fire areas:
 - Wallaby Rocks (near Zumsteins)
 - Southern end (near Chimney Pots walk)
- Fires combined over the week.
- Impacted GWMWater water transfer infrastructure near Moora.
- Ongoing risk to Rocklands catchment area.



Wimmera 18 Wallaby rocks- Fire severity



Victoria Range Bushfire



Victoria Range Bushfire

